



## 产品简介

Y3 系列低压大功率电动机是采用新材料、新工艺和新标准而制造的全封闭、自扇冷鼠笼三相异步电动机。该系列电机结构合理、外形美观，具有高效率、低噪音、低振动等优点，可广泛应用于风机、水泵、机床、压缩机、运输机械等驱动各种通用机械设备，也可用在石油、化工、钢铁、矿山等其他环境比较恶劣的场所使用。

## PRODUCT INTRODUCTION

Y3 series motors are totally enclosed fan cooled squirrel cage three-phase motors, adopting with new materials new processing methods and new safety design technology. This series motor can be widely use in various kinds of general use machineries like fans, pumps, machine tools, compressors, transportation and so on, and can also be used in the hazardous areas with oil and chemical, steel paints, mining industry.

## 详细说明

执行标准：JB/T 10868-2008  
中心高：H355-450mm  
额定输出功率：200kW-900kW  
能效等级：三级能效 (GB18613) 和 IE1 (IEC60034-30)  
电压和频率：380V/50Hz  
防护等级：IP55  
绝缘 / 温升等级：F/B  
安装形式：B3、B5、B35、V1  
环境温度：-15°C到 +40°C，相对湿度≤ 90%  
冷却方式：IC411  
海拔：≤ 1000 米

## SPECIFICATION

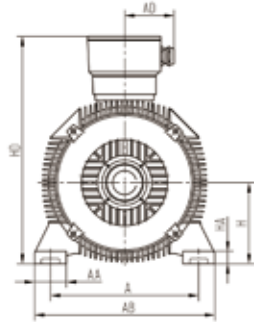
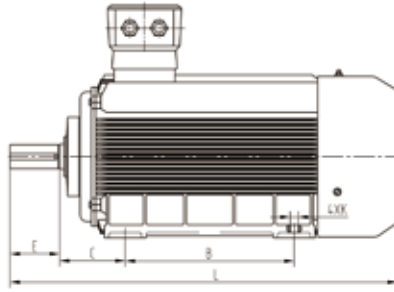
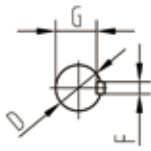
Standard: JB/T 10868-2008  
Frame size: 355-450  
Rated power: 200kW-900kW  
Degrees of energy efficiency: Grade 3(GB18613) & IE1 (IEC60034-30)  
Voltage and frequency: 380V/50Hz  
Degrees of protections: IP55  
Degrees of insulation/temperature rise: F/B  
Installation Method: B3/B5/B35/V1  
Ambient temperature: -15°C ~+40°C, Relative humidity should be less than 90%  
Cooling Method: IC411  
Altitude should be lower than 1000 m above sea level.

Motor Type	Rated Power (kW)	Rated Speed r/min	Rated Current A	Rated Eff. $\eta$ %	Power Factor $\cos\phi$	Rated Torque Nm	$\frac{I_{st}}{I_n}$	$\frac{T_{st}}{T_n}$	$\frac{T_{max}}{T_n}$	$\frac{T_{min}}{T_n}$	LW dB(A) no load	LW dB(A) load	Net Weight kg
2极 - 同步转速 3000r/min 2-pole, 3000r/min synchronous													
Y3-355L1-2	355	2980	622	96.4	0.90	1138.0	6.5	1.3	2.5	0.7	104	106	2300
Y3-355L2-2	400	2875	701	96.4	0.90	1329.0	6.5	1.3	2.5	0.7	104	106	2350
Y3-355L3-2	450	2980	788	96.4	0.90	1443.0	6.5	1.3	2.5	0.7	108	110	2400
Y3-400L1-2	450	2980	788	96.4	0.90	1443.0	6.5	1.3	2.5	0.7	108	110	3200
Y3-400L2-2	500	2980	876	96.4	0.90	1603.0	6.5	1.3	2.5	0.7	108	110	3250
Y3-400L3-2	560	2980	969	96.5	0.91	1795.0	6.5	1.2	2.5	0.6	109	111	3300
Y3-450L1-2	560	2985	969	96.5	0.91	1792.0	6.5	1.2	2.5	0.6	109	111	3900
Y3-450L2-2	630	2985	1090	96.5	0.91	2016.0	6.5	1.2	2.5	0.6	109	111	4000
Y3-450L3-2	710	2985	1227	96.6	0.91	2273.0	6.5	1.2	2.5	0.6	109	111	4100
Y3-450L4-2	800	2985	1383	96.6	0.91	2561.0	6.5	1.2	2.5	0.6	109	111	4200
4极 - 同步转速 1500r/min 4-pole, 1500r/min synchronous													
Y3-355L1-4	355	1490	636	96.3	0.88	2276.0	6.5	1.6	2.5	0.8	102	105	2300
Y3-355L2-4	400	1490	717	96.3	0.88	2565.0	6.5	1.6	2.5	0.8	102	105	2350
Y3-355L3-4	450	1490	807	96.3	0.88	2885.0	6.5	1.6	2.5	0.7	105	108	2400
Y3-400L1-4	450	1490	807	96.3	0.88	2885	6.5	1.6	2.5	0.7	105	108	3100
Y3-400L2-4	500	1490	896	96.4	0.88	3206	6.5	1.4	2.5	0.7	105	108	3250
Y3-400L3-4	560	1490	992	96.4	0.89	3591	6.5	1.4	2.5	0.7	108	111	3350
Y3-400L4-4	630	1490	1115	96.5	0.89	4040	6.5	1.4	2.5	0.6	108	111	3450
Y3-450L1-4	630	1495	1115	96.5	0.89	4026	6.5	1.4	2.5	0.6	108	111	4100
Y3-450L2-4	710	1495	1256	96.5	0.89	4537	6.5	1.4	2.5	0.6	108	111	4200
Y3-450L3-4	800	1495	1398	96.6	0.90	5113	6.5	1.4	2.5	0.6	108	111	4300
Y3-450L4-4	900	1495	1573	96.6	0.90	5752	6.5	1.4	2.5	0.6	108	111	4400
6极 - 同步转速 1000r/min 6-pole, 1000r/min synchronous													
Y3-355L1-6	315	990	608	96.0	0.82	3040	6.5	1.8	2.5	0.8	98	102	2400
Y3-355L2-6	355	990	685	96.0	0.82	3426	6.5	1.8	2.5	0.8	98	102	2450

Motor Type	Rated Power (kW)	Rated Speed r/min	Rated Current A	Rated Eff. $\eta$ %	Power Factor $\cos\phi$	Rated Torque Nm	$\frac{I_{st}}{I_n}$	$\frac{T_{st}}{T_n}$	$\frac{T_{max}}{T_n}$	$\frac{T_{min}}{T_n}$	LW dB(A) no load	LW dB(A) load	Net Weight kg
Y3-400L1-6	355	995	685	96.0	0.82	3409	6.5	1.8	2.4	0.8	98	102	3600
Y3-400L2-6	400	995	761	96.2	0.83	3841	6.5	1.6	2.4	0.8	98	102	3800
Y3-400L3-6	450	995	856	96.2	0.83	4321	6.5	1.6	2.4	0.8	102	106	3900
Y3-400L4-6	500	995	949	96.4	0.83	4801	6.5	1.6	2.4	0.8	102	106	4000
Y3-450L1-6	500	995	949	96.4	0.83	4801	6.5	1.6	2.4	0.8	102	106	4100
Y3-450L2-6	560	995	1063	96.4	0.83	5377	6.5	1.6	2.4	0.8	105	109	4200
Y3-450L3-6	630	995	1181	96.5	0.84	6049	6.5	1.6	2.4	0.7	105	109	4300
Y3-450L4-6	710	995	1331	96.5	0.84	6818	6.5	1.6	2.4	0.7	105	109	4400
8极 - 同步转速 750r/min 8-pole, 750r/min synchronous													
Y3-355L1-8	250	740	499	95.2	0.80	3228	6.5	1.6	2.5	0.8	95	100	2400
Y3-355L2-8	315	740	628	95.2	0.80	4067	6.5	1.6	2.5	0.8	95	100	2500
Y3-400L1-8	315	745	628	95.2	0.80	4040	6.5	1.6	2.4	0.8	95	100	3150
Y3-400L2-8	355	745	705	95.6	0.80	4553	6.0	1.6	2.4	0.8	95	100	3200
Y3-400L3-8	400	745	795	95.6	0.80	5130	6.0	1.6	2.4	0.8	95	100	3250
Y3-450L1-8	400	745	775	95.6	0.82	5130	6.0	1.6	2.4	0.7	99	104	3800
Y3-450L2-8	450	745	869	95.9	0.82	5771	6.0	1.6	2.4	0.7	99	104	4100
Y3-450L3-8	500	745	963	96.2	0.82	6412	6.0	1.6	2.4	0.7	99	104	4200
Y3-450L4-8	560	745	1079	96.2	0.82	7182	6.0	1.6	2.4	0.7	102	107	4300
10极 - 同步转速 600 r/min 10-pole, 600r/min synchronous													
Y3-355L1-10	200	595	434	94.7	0.74	3211	6.0	1.4	2.5	0.8	96	101	2400
Y3-355L2-10	250	595	542	94.7	0.74	4014	6.0	1.4	2.5	0.8	99	104	2500
Y3-400L1-10	250	595	542	94.7	0.74	4014	6.0	1.4	2.5	0.8	99	104	3500
Y3-400L2-10	315	595	680	95.1	0.74	5058	6.0	1.4	2.5	0.8	99	104	3600
Y3-400L3-10	355	595	766	95.1	0.74	5700	6.0	1.3	2.5	0.7	99	104	3700
Y3-450L1-10	355	595	766	95.1	0.74	5700	6.0	1.3	2.5	0.7	99	104	4400
Y3-450L2-10	400	595	859	95.6	0.74	6423	6.0	1.3	2.5	0.7	99	104	4500
Y3-450L3-10	450	595	966	95.6	0.74	7226	6.0	1.3	2.5	0.7	99	104	4600

### ■ B3 外形及安装尺寸图

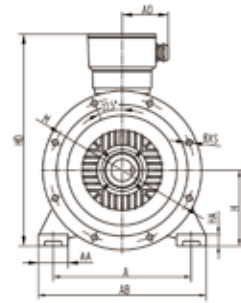
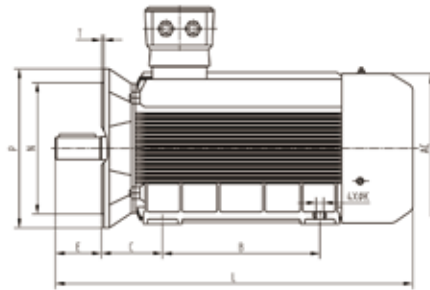
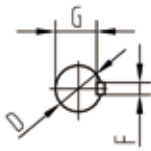
DIMENSIONS MOUNT B3



Frame	A	B	C	D	E	F	G	H	K	AB	AC	AD	HD	HA	AA	L
Y3-355-2	630	800	224	80	170	22	71	355	35	760	770	760	980	49	140	1870
Y3-355-4-10	630	800	224	110	210	28	100	355	35	760	770	760	980	49	140	1920
Y3-400-2	710	900	224	85	170	22	76	400	35	840	860	900	1060	50	145	1910
Y3-400-4-10	710	900	224	120	210	32	109	400	35	840	860	900	1060	50	145	1975
Y3-450-2	800	1000	250	95	170	25	86	450	42	990	960	940	1130	54	190	2070
Y3-450-4-10	800	1000	250	130	210	32	119	450	42	990	960	940	1130	54	190	2110

### ■ B35 外形及安装尺寸图

DIMENSIONS MOUNT B35

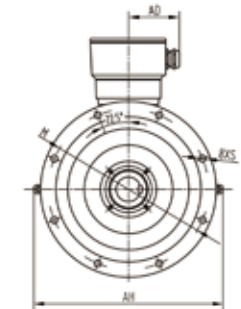
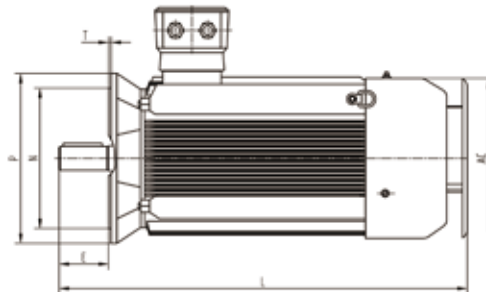
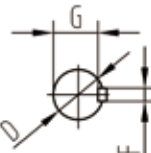


Frame	A	B	C	D	E	F	G	H	M	N	P	S	K	AB	AC	AD	HD	HA	AA	L	T
Y3-355-2	630	800	224	80	170	22	71	355	840	780	900	24	35	760	770	760	980	49	140	1870	6
Y3-355-4-10	630	800	224	110	210	28	100	355	840	780	900	24	35	760	770	760	980	49	140	1920	6
Y3-400-2	710	900	224	85	170	22	76	400	940	880	1000	28	35	840	860	900	1060	50	145	1910	6
Y3-400-4-10	710	900	224	120	210	32	109	400	940	880	1000	28	35	840	860	900	1060	50	145	1975	6
Y3-450-2	800	1000	250	95	170	25	86	450	1080	1000	1150	28	42	990	960	940	1130	54	190	2070	6
Y3-450-4-10	800	1000	250	130	210	32	119	450	1080	1000	1150	28	42	990	960	940	1130	54	190	2110	6

Note : R=0

### ■ V1 外形及安装尺寸图

DIMENSIONS MOUNT V1



Frame	AH	D	E	F	G	M	N	P	S	T	AC	AD	L
Y3-355-2	1220	80	170	22	71	840	780	900	24	6	760	760	1920
Y3-355-4-10	1220	110	210	28	100	840	780	900	24	6	760	760	1970
Y3-400-2	1255	85	170	22	76	940	880	1000	28	6	840	900	1960
Y3-400-4-10	1255	120	210	32	109	940	880	1000	28	6	840	900	2025
Y3-450-2	1500	95	170	25	86	1080	1000	1150	28	6	990	940	2120
Y3-450-4-10	1500	130	210	32	119	1080	1000	1150	28	6	990	940	2160

Note : R=0