

# YEJ

SERIES ELECTROMAGNETIC BREAKING THREE-PHASE INDUCTION MOTOR



## PRODUCT INTRODUCTION

YEJ series motors are derived from IE1 series motors with fast braking, simple structure and high stability. They are widely used on mechanical equipment and driving machines where rapid and accurate braking is demanded, such as lathe machine, packing machine, wood machine, food processing equipment, chemical engineering, textile machine, architectural machine, gear reducer and so on.

## SPECIFICATION

Frame size: H80-355mm

Rated power: 0.55kW-45kW

Voltage and frequency: 400V/ 50Hz

Degrees of protections: IP55(motor) IP23(braker)

Degrees of insulation/Temperature rise: F/B

Installation Method: B3\ B5\B35\V1

Ambient temperature: -15°C~+40°C

Relative humidity should be less than 90%

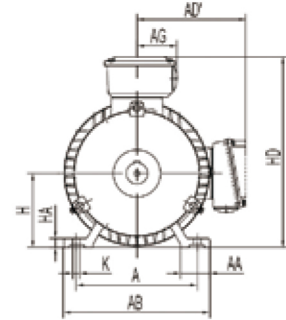
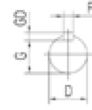
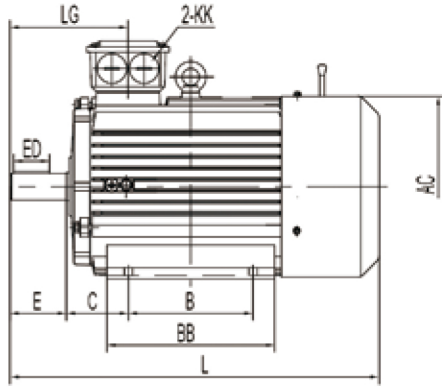
Altitude should be lower than 1000 m above sea level

Cooling Method: IC411、IC416、IC418、IC410

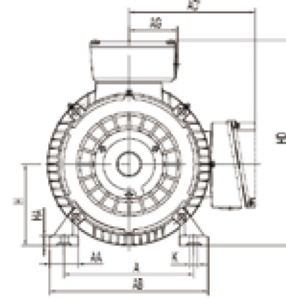
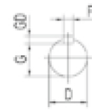
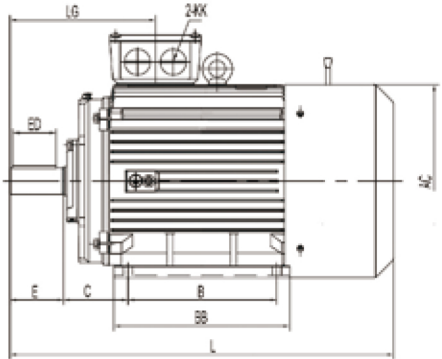
WINDMILL

**DIMENSIONS MOUNT B3**

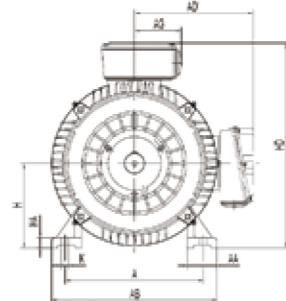
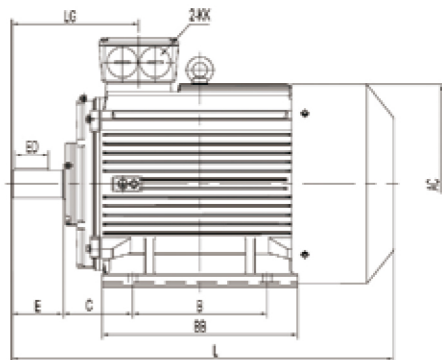
**YEJ80-132**



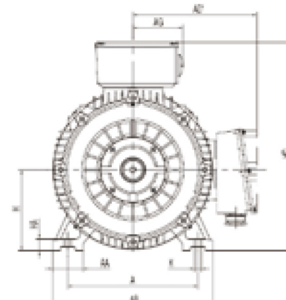
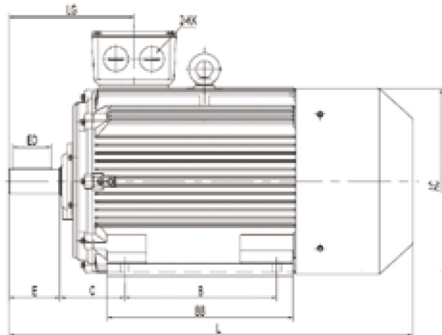
**YEJ160-200**



**YEJ225-280**



**YEJ315-355**

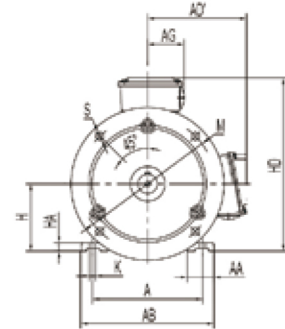
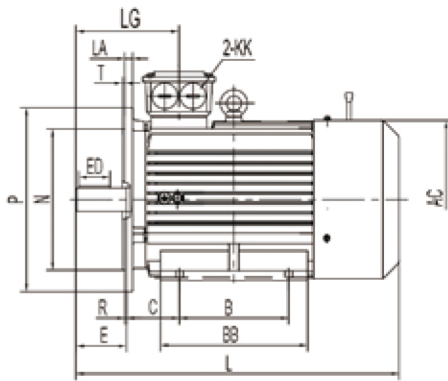


Frame	A	AA	AB	AC	AD'	B	BB	C	D	E	ED	F	G	GD	H	HA	HD	K	KK	L	LG
80M	125	34	160	175	150	100	130	50	19	40	22	6	15.5	6	80	10	230	10	M25×1.5	350	106
90S	140	36	180	190	165	100	135	56	24	50	32	8	20	7	90	12.5	260	10	M25×1.5	390	124
90L	140	36	180	190	165	125	160	56	24	50	32	8	20	7	90	12.5	260	10	M25×1.5	415	124
100L	160	40	200	215	170	140	182	63	28	60	40	8	24	7	100	14	275	12	M25×1.5	445	140
112M	190	45	230	236	195	140	195	70	28	60	40	8	24	7	112	14	310	12	M32×1.5	475	145
132S	216	52	265	275	215	140	205	89	38	80	56	10	33	8	132	16	350	12	M32×1.5	550	169
132M	216	52	265	275	215	178	245	89	38	80	56	10	33	8	132	16	350	12	M32×1.5	590	169
160M	254	65	320	330	265	210	260	108	42	110	80	12	37	8	160	19	425	14.5	M40×1.5	715	270
160L	254	65	320	330	265	254	305	108	42	110	80	12	37	8	160	19	425	14.5	M40×1.5	760	270
180M	279	70	350	380	280	241	285	121	48	110	80	14	42.5	9	180	22	440	14.5	M40×1.5	790	277
180L	279	70	350	380	280	279	325	121	48	110	80	14	42.5	9	180	22	440	14.5	M40×1.5	830	277
200L	318	80	390	420	315	305	355	133	55	110	80	16	49	10	200	25	505	18.5	M50×1.5	895	298
225S(4-8P)	356	75	435	465	335	286	350	149	60	140	100	18	53	11	225	28	550	18.5	M50×1.5	970	340
225M(2P)	356	75	435	465	335	311	375	149	55	110	80	16	49	10	225	28	550	18.5	M50×1.5	965	310
225M(4-8P)	356	75	435	465	335	311	375	149	60	140	100	18	53	11	225	28	550	18.5	M50×1.5	995	340
250M(2P)	406	100	485	520	375	349	450	168	60	140	100	18	53	11	250	33	635	24	M63×1.5	1075	357
250M(4-8P)	406	100	485	520	375	349	450	168	65	140	100	18	58	11	250	33	635	24	M63×1.5	1075	357
280S(2P)	457	105	550	570	405	368	490	190	65	140	100	18	58	11	280	35	695	24	M63×1.5	1135	350
280S(4-8P)	457	105	550	570	405	368	490	190	75	140	100	20	67.5	12	280	35	695	24	M63×1.5	1155	350
280M(2P)	457	105	550	570	405	419	540	190	65	140	100	18	58	11	280	35	695	24	M63×1.5	1190	350
280M(4-8P)	457	105	550	570	405	419	540	190	75	140	100	20	67.5	12	280	35	695	24	M63×1.5	1210	350
315S(2P)	508	125	630	650	500	406	515	216	65	140	100	18	58	11	315	45	810	28	M63×1.5	1335	387
315M(2P)	508	125	630	650	500	457	625	216	65	140	100	18	58	11	315	45	810	28	M63×1.5	1445	387
315L(2P)	508	125	630	650	500	508	625	216	65	140	100	18	58	11	315	45	810	28	M63×1.5	1445	387
315S(4-8P)	508	125	630	650	500	406	515	216	80	170	130	22	71	14	315	45	810	28	M63×1.5	1365	417
315M(4-8P)	508	125	630	650	500	457	625	216	80	170	130	22	71	14	315	45	810	28	M63×1.5	1475	417
315L(4-8P)	508	120	630	650	500	508	625	216	80	170	130	22	71	14	315	45	810	28	M63×1.5	1475	417
355M(2P)	610	125	735	735	645	560	850	254	75	140	110	20	67.5	12	355	49	1000	28	M63×1.5	1850	420
355L(2P)	610	125	735	735	645	630	850	254	75	140	110	20	67.5	12	355	49	1000	28	M63×1.5	1850	420
355M(4-8P)	610	125	735	735	645	560	850	254	95	170	140	25	86	14	355	49	1000	28	M63×1.5	1880	450
355L(4-8P)	610	125	735	735	645	630	850	254	95	170	140	25	86	14	355	49	1000	28	M63×1.5	1880	450

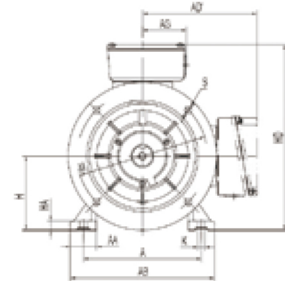
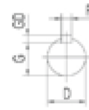
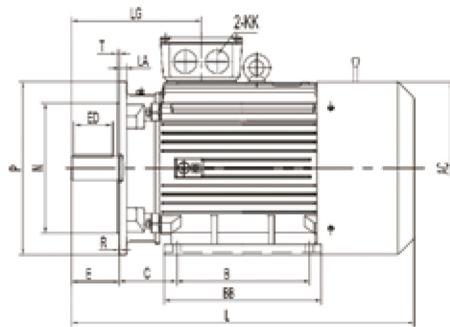
Note : R=0

**DIMENSIONS MOUNT B35**

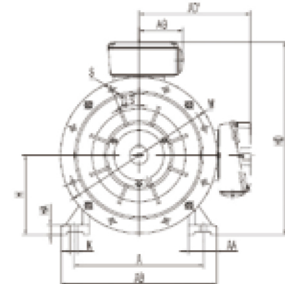
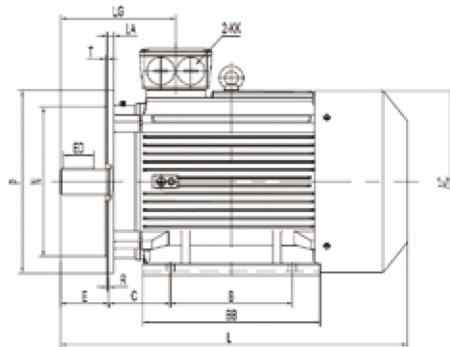
**YEJ80-132**



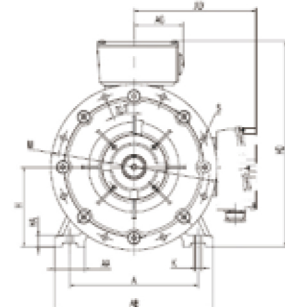
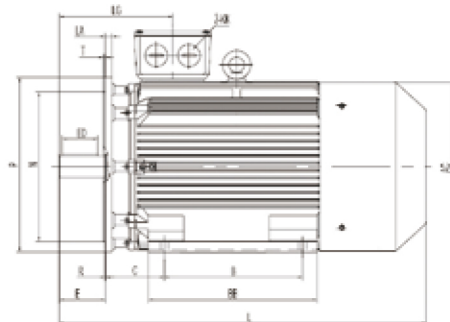
**YEJ160-200**



**YEJ225-280**



**YEJ315-355**

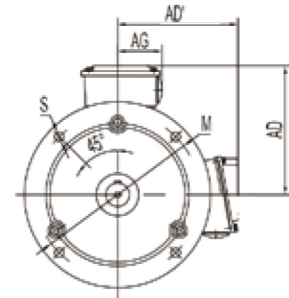
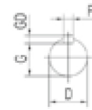
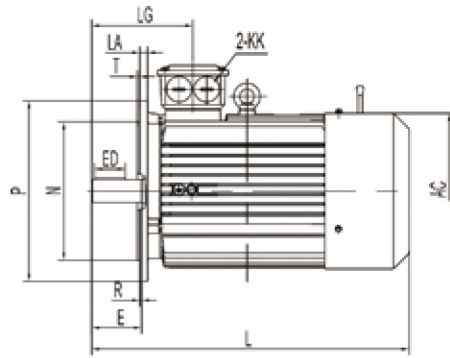


Frame	A	AA	AB	AC	AD'	B	BB	C	D	E	ED	F	G	GD	H	HA	HD	K	KK	L	LG	LA	M	N	P	S	T
80M	125	34	160	175	150	100	130	50	19	40	22	6	15.5	6	80	10	230	10	M25x1.5	350	106	12	165	130	200	12	3.5
90S	140	36	180	190	165	100	135	56	24	50	32	8	20	7	90	12.5	260	10	M25x1.5	390	124	12	165	130	200	12	3.5
90L	140	36	180	190	165	125	160	56	24	50	32	8	20	7	90	12.5	260	10	M25x1.5	415	124	12	165	130	200	12	3.5
100L	160	40	200	215	170	140	182	63	28	60	40	8	24	7	100	14	275	12	M25x1.5	445	140	14	215	180	250	14.5	4
112M	190	45	230	236	195	140	195	70	28	60	40	8	24	7	112	14	310	12	M32x1.5	475	145	14	215	180	250	14.5	4
132S	216	52	265	275	215	140	205	89	38	80	56	10	33	8	132	16	350	12	M32x1.5	550	169	14	265	230	300	14.5	4
132M	216	52	265	275	215	178	245	89	38	80	56	10	33	8	132	16	350	12	M32x1.5	590	169	14	265	230	300	14.5	4
160M	254	65	320	330	265	210	260	108	42	110	80	12	37	8	160	19	425	14.5	M40x1.5	715	270	15	300	250	350	18.5	5
160L	254	65	320	330	265	254	305	108	42	110	80	12	37	8	160	19	425	14.5	M40x1.5	760	270	15	300	250	350	18.5	5
180M	279	70	350	380	280	241	285	121	48	110	80	14	42.5	9	180	22	440	14.5	M40x1.5	790	277	15	300	250	350	18.5	5
180L	279	70	350	380	280	279	325	121	48	110	80	14	42.5	9	180	22	440	14.5	M40x1.5	830	277	15	300	250	350	18.5	5
200L	318	80	395	420	315	305	355	133	55	110	80	16	49	10	200	25	505	18.5	M50x1.5	895	298	17	350	300	400	18.5	5
225S(4-8P)	356	75	436	465	335	286	350	149	60	140	100	18	53	11	225	28	550	18.5	M50x1.5	970	340	20	400	350	450	18.5	5
225M(2P)	356	75	436	465	335	311	375	149	55	110	80	16	49	10	225	28	550	18.5	M50x1.5	965	310	20	400	350	450	18.5	5
225M(4-8P)	356	75	436	465	335	311	375	149	60	140	100	18	53	11	225	28	550	18.5	M50x1.5	995	340	20	400	350	450	18.5	5
250M(2P)	406	100	495	520	375	349	450	168	60	140	100	18	53	11	250	33	635	24	M63x1.5	1075	357	20	500	450	550	18.5	5
250M(4-8P)	406	100	495	520	375	349	450	168	65	140	100	18	58	11	250	33	635	24	M63x1.5	1075	357	20	500	450	550	18.5	5
280S(2P)	457	105	550	570	405	368	490	190	65	140	100	18	58	11	280	35	695	24	M63x1.5	1135	350	22	500	450	550	18.5	5
280S(4-8P)	457	105	550	570	405	368	490	190	75	140	100	20	67.5	12	280	35	695	24	M63x1.5	1155	350	22	500	450	550	18.5	5
280M(2P)	457	105	550	570	405	419	540	190	65	140	100	18	58	11	280	35	695	24	M63x1.5	1190	350	22	500	450	550	18.5	5
280M(4-8P)	457	105	550	570	405	419	540	190	75	140	100	20	67.5	12	280	35	695	24	M63x1.5	1210	350	22	500	450	550	18.5	5
315S(2P)	508	125	630	650	500	406	515	216	65	140	100	18	58	11	315	45	810	28	M63x1.5	1335	387	24	600	550	660	24	6
315M(2P)	508	125	630	650	500	457	625	216	65	140	100	18	58	11	315	45	810	28	M63x1.5	1445	387	24	600	550	660	24	6
315L(2P)	508	125	630	650	500	508	625	216	65	140	100	18	58	11	315	45	810	28	M63x1.5	1445	387	24	600	550	660	24	6
315S(4-8P)	508	125	630	650	500	406	515	216	80	170	130	22	71	14	315	45	810	28	M63x1.5	1365	417	24	600	550	660	24	6
315M(4-8P)	508	125	630	650	500	457	625	216	80	170	130	22	71	14	315	45	810	28	M63x1.5	1475	417	24	600	550	660	24	6
315L(4-8P)	508	125	630	650	500	508	625	216	80	170	130	22	71	14	315	45	810	28	M63x1.5	1475	417	24	600	550	660	24	6
355M(2P)	610	125	735	735	645	560	850	254	75	140	110	20	67.5	12	355	49	1000	28	M63x1.5	1850	420	25	740	680	800	24	6
355L(2P)	610	125	735	735	645	630	850	254	75	140	110	20	67.5	12	355	49	1000	28	M63x1.5	1850	420	25	740	680	800	24	6
355M(4-8P)	610	125	735	735	645	560	850	254	95	170	140	25	86	14	355	49	1000	28	M63x1.5	1880	450	25	740	680	800	24	6
355L(4-8P)	610	125	735	735	645	630	850	254	95	170	140	25	86	14	355	49	1000	28	M63x1.5	1880	450	25	740	680	800	24	6

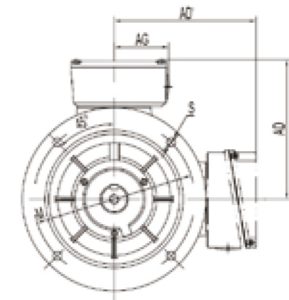
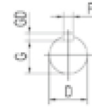
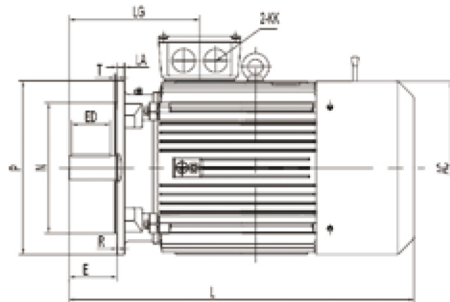
Note : R=0

**DIMENSIONS MOUNT B5 & V1**

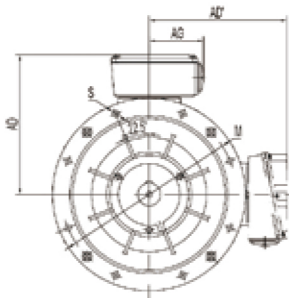
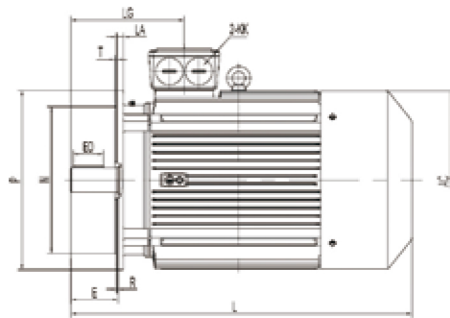
**YEJ80-132**



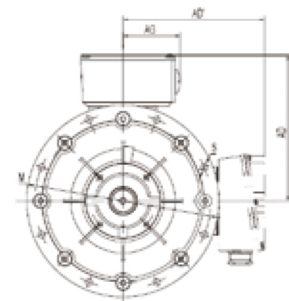
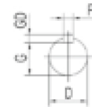
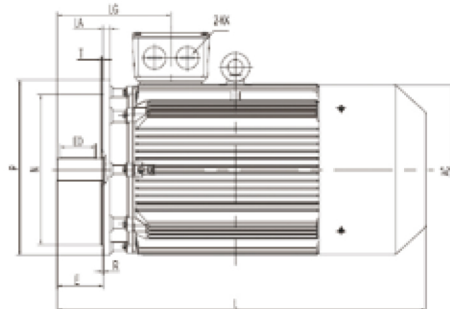
**YEJ160-200**



**YEJ225-280**



**YEJ315-355**



FRAME	AC	AD'	D	E	ED	F	G	GD	KK	L	LM	LA	LG	M	N	P	S	T
80M	175	150	19	40	22	6	15.5	6	M25x1.5	350	390	12	106	165	130	200	12	3.5
90S	190	165	24	50	32	8	20	7	M25x1.5	390	430	12	124	165	130	200	12	3.5
90L	190	165	24	50	32	8	20	7	M25x1.5	415	455	12	124	165	130	200	12	3.5
100L	215	170	28	60	40	8	24	7	M25x1.5	445	495	14	140	215	180	250	14.5	4
112M	236	195	28	60	40	8	24	7	M32x1.5	475	525	14	145	215	180	250	14.5	4
132S	275	215	38	80	56	10	33	8	M32x1.5	550	600	14	169	265	230	300	14.5	4
132M	275	215	38	80	56	10	33	8	M32x1.5	590	640	14	169	265	230	300	14.5	4
160M	330	265	42	110	80	12	37	8	M40x1.5	715	770	15	270	300	250	350	18.5	5
160L	330	265	42	110	80	12	37	8	M40x1.5	760	815	15	270	300	250	350	18.5	5
180M	380	280	48	110	80	14	42.5	9	M40x1.5	790	860	15	277	300	250	350	18.5	5
180L	380	280	48	110	80	14	42.5	9	M40x1.5	830	900	15	277	300	250	350	18.5	5
200L	420	315	55	110	80	16	49	10	M50x1.5	895	965	17	300	350	300	400	18.5	5
225S(4-8P)	465	335	60	140	100	18	53	11	M50x1.5	970	1040	20	340	400	350	450	18.5	5
225M(2P)	465	335	55	110	80	16	49	10	M50x1.5	965	1035	20	310	400	350	450	18.5	5
225M(4-8P)	465	335	60	140	100	18	53	11	M50x1.5	995	1065	20	340	400	350	450	18.5	5
250M(2P)	520	375	60	140	100	18	53	11	M63x1.5	1075	1155	20	357	500	450	550	18.5	5
250M(4-8P)	520	375	65	140	100	18	58	11	M63x1.5	1075	1155	20	357	500	450	550	18.5	5
280S(2P)	570	405	65	140	100	18	58	11	M63x1.5	1135	1215	22	350	500	450	550	18.5	5
280S(4-8P)	570	405	75	140	100	20	67.5	12	M63x1.5	1155	1235	22	350	500	450	550	18.5	5
280M(2P)	570	405	65	140	100	18	58	11	M63x1.5	1190	1270	22	350	500	450	550	18.5	5
280M(4-8P)	570	405	75	140	100	20	67.5	12	M63x1.5	1210	1290	22	350	500	450	550	18.5	5
315S(2P)V1	650	500	65	140	100	18	58	11	M63x1.5	_	1435	24	387	600	550	660	24	6
315M(2P)V1	650	500	65	140	100	18	58	11	M63x1.5	_	1545	24	387	600	550	660	24	6
315L(2P)V1	650	500	65	140	100	18	58	11	M63x1.5	_	1545	24	387	600	550	660	24	6
315S(4-8P)V1	650	500	80	170	130	22	71	14	M63x1.5	_	1465	24	417	600	550	660	24	6
315M(4-8P)V1	650	500	80	170	130	22	71	14	M63x1.5	_	1575	24	417	600	550	660	24	6
315L(4-8P)V1	650	500	80	170	130	22	71	14	M63x1.5	_	1575	24	417	600	550	660	24	6
355M(2P)V1	735	645	75	140	110	20	67.5	12	M63x1.5	_	1950	25	420	740	680	800	24	6
355L(2P)V1	735	645	75	140	110	20	67.5	12	M63x1.5	_	1950	25	420	740	680	800	24	6
355M(4-8P)V1	735	645	95	170	140	25	86	14	M63x1.5	_	1980	25	450	740	680	800	24	6
355L(4-8P)V1	735	645	95	170	140	25	86	14	M63x1.5	_	1980	25	450	740	680	800	24	6

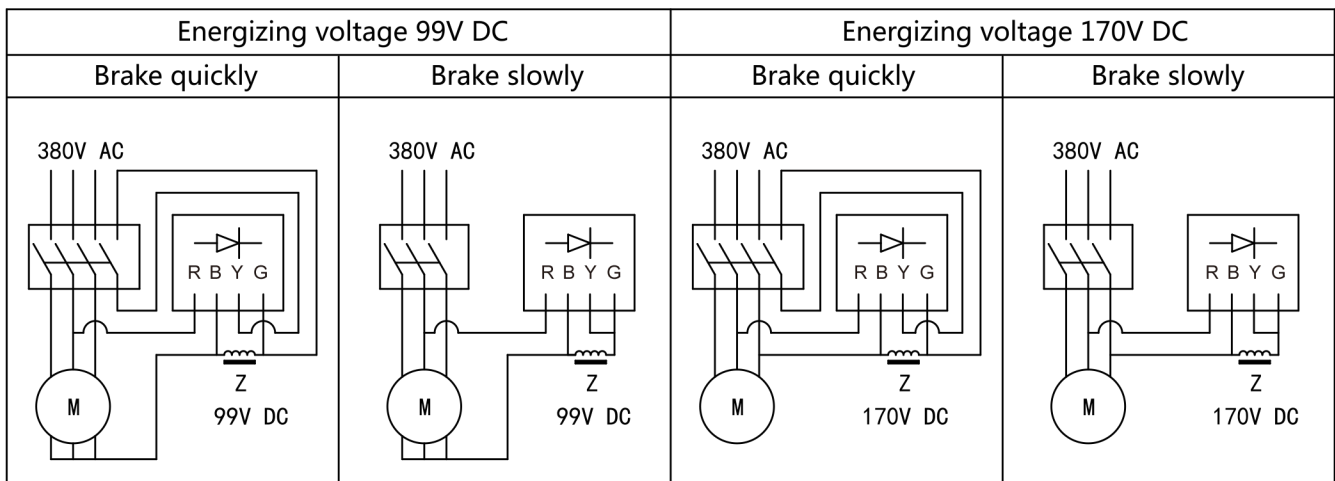
Note : R=0

**PERFORMANCE PARAMETERS**

Frame No.	Braking torque Nm	Braking power W	No-load brake lag time s	Energizing voltage V	Air gap mm
80	7.5	40	0.2	99	0.3
90	15	50	0.2	99	0.3
100	30	60	0.2	99	0.4
112	40	80	0.25	170	0.4
132	80	110	0.25	170	0.5
160	150	130	0.35	170	0.5
180	200	150	0.35	170	0.6
200	300	150	0.45	170	0.6
225	450	200	0.45	170	0.6
250	600	200	0.7	170	0.8

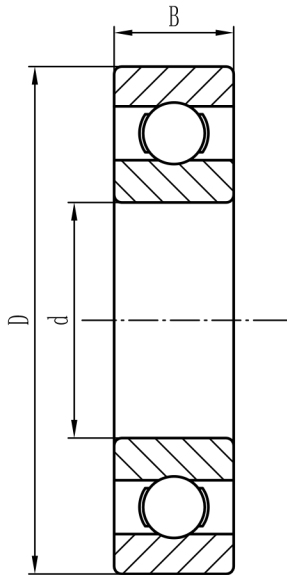
Note: Brake lag time of the DC power supply cut off is no-load brake lag time.

**CONNECTION**





## BEARING



Frame	DE	NDE	d	D	B
80	6204 ZZ	6204 ZZ	20	47	14
90	6205 ZZ	6205 ZZ	25	52	15
100	6206 ZZ	6206 ZZ	30	62	16
112	6306 ZZ	6306 ZZ	30	72	19
132	6308 ZZ	6308 ZZ	40	90	23
160	6309	6309	45	100	25
180	6311	6311	55	120	29
200	6312	6312	60	130	31
225	6313	6313	65	140	33
250 ( Horizontal )	6314	6314	70	150	35
250(Vertical)	6314	7314	70	150	35
280-2P ( Horizontal )	6314	6314	70	150	35
280-2P(Vertical)	6314	7314	70	150	35
280-4-8P ( Horizontal )	6317	6317	85	180	41
280-4-8P(Vertical)	6317	7317	85	180	41
315-2P ( Horizontal )	6316	6316	80	170	39
315-2P(Vertical)	6316	7316	80	170	39
315-4-10P ( Horizontal )	6319	6319	95	200	45
315-4-10P(Vertical)	6319	7319	95	200	45
355-2P ( Horizontal )	6319	6319	95	200	45
355-2P(Vertical)	6319	7319	95	200	45
355-4-10P ( Horizontal )	6322	6322	110	240	50
355-4-10P(Vertical)	6322	7322	110	240	50
355L3-4P,L2-6P ( Horizontal )	NU324	6324	120	260	55
355L3-4P,L2-6P(Vertical)	NU324	7324	120	260	55

## BEARING TYPE AND LUBRICATION INTERVAL TABLE

Notes: Motor H80~132 with sealed bearings need not to grease, motors whose frames dimensions are greater than H160 are equipped with grease filling and draining devices.

For vertical motor, if unspecified, the interval is half of the above value. The above value is based on bearing temperature of 80 °C and environment temperature of +25 °C . The environment temperature changes will affect the bearing temperature. The interval shall be half every 15°C increased of the bearing temperature, while double the interval every 15°C reduced of bearing temperature.

The standard motor use HTS grease. Please do not mix other brand and type of grease to avoid damage to the bearing which can be caused by incompatible of different grease.

Frame size	Frame size		Grease amount g	Interval(hour)		
	DE	NDE		<3600rpm	<1800rpm	<1000rpm
160	6309	6309	30	3000	4000	5000
180	6311	6311	50	3000	4000	5000
200	6312	6312	60	3000	4000	5000
225	6313	6313	80	3000	4000	5000
250	6314	6314	80	2000	4000	5000
280-2P	6314	6314	80	2000	-	-
280-4-8P	6317	6317	120	-	4000	5000
315-2P	6316	6316	100	2000	-	-
315-4-10P	6319	6319	120	-	2000	4000
355-2P	6319	6319	120	1000	-	-
355-4-10P	6322	6322	220	-	2000	4000
355L3-4P,L2-6P	Nu324	6324	240	-	2000	4000