

YVF2

SERIES CONVERTER-FED THREE-PHASE INDUCTION MOTOR



PRODUCT INTRODUCTION

YVF2 series motors use squirrel-cage rotor structure and stand out for reliable operation and easy maintenance. Together with the variable frequency inverters, the motor system can realize a range of speed adjustment which can save energy and achieve automatic controlling. If fitted with highly accurate sensors, the system can achieve high precision closed loop control. YVF2 series motors are suitable for various operation systems where speed regulation is needed, such as light industry, textile, chemistry, metallurgy, crane, machine tool and so on.

SPECIFICATION

Frame size: H80-355mm
Rated power: 0.55kW-315kW
Voltage and frequency: 400V/ 50Hz
Running zone for constant torque & constant power : 5-50Hz & 50-100Hz
Degrees of protections: IP55
Degrees of insulation/Temperature rise: F/B
Installation Method: B3\ B5\B35\V1
Ambient temperature: -15°C~+40°C
Relative humidity should be less than 90%
Altitude should be lower than 1000 m above sea level
Cooling Method: IC411 、 IC416、 IC418、 IC410

SUN
WAVE
M

4-pole, 1500 r/min synchronous speed

Motor Type	Rated Power (kW)	Rated Current A	Rated Torque N·m	$\frac{T_{max}}{T_n}$	Rated speed r/min	Weight kg	
						IC416	IC411
YVF2-90S-4	1.1	2.8	7.5	2.8	1395	24	22
YVF2-90L-4	1.5	3.9	10.2	2.8	1410	29	27
YVF2-100L1-4	2.2	5.0	14.7	2.8	1430	36	34
YVF2-100L2-4	3	6.8	20	2.8	1430	40	38
YVF2-112M-4	4	8.8	26.5	2.8	1440	48	44
YVF2-132S-4	5.5	11.5	36.4	2.8	1445	70	61
YVF2-132M-4	7.5	15.5	49.6	2.8	1445	82	73
YVF2-160M-4	11	22.5	72.5	2.8	1450	125	113
YVF2-160L-4	15	29.7	98.8	2.8	1450	145	133
YVF2-180M-4	18.5	36.5	121	2.8	1465	187	167
YVF2-180L-4	22	42.5	143	2.8	1465	201	181
YVF2-200L-4	30	58.5	195	2.8	1470	257	232
YVF2-225S-4	37	72.8	240	2.8	1470	317	287
YVF2-225M-4	45	84.7	291	2.8	1475	352	322
YVF2-250M-4	55	104	356	2.8	1475	411	381
YVF2-280S-4	75	136	484	2.8	1480	545	510
YVF2-280M-4	90	163	581	2.8	1480	635	600
YVF2-315S-4	110	205	708	2.8	1485	961	921
YVF2-315M-4	132	235	849	2.8	1485	1042	1002
YVF2-315L1-4	160	280	1029	2.8	1485	1110	1070
YVF2-315L2-4	200	360	1282	2.8	1490	1221	1181
YVF2-355M-4	250	445	1603	2.8	1490	1765	1725
YVF2-355L-4	315	558	2020	2.8	1490	1995	1955

6-pole, 1000 r/min synchronous speed

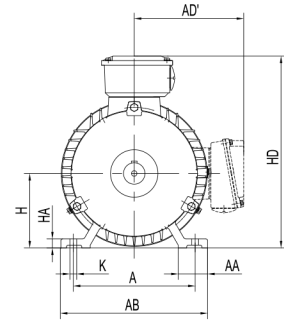
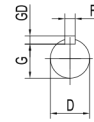
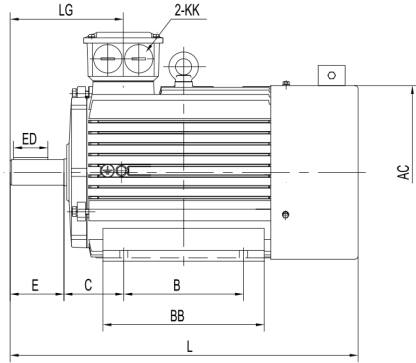
Motor Type	Rated Power (kW)	Rated Current A	Rated Torque N·m	$\frac{T_{max}}{T_n}$	Rated speed r/min	Weight kg	
						IC416	IC411
YVF2-90S-6	0.75	2.3	7.8	2.8	920	25	23
YVF2-90L-6	1.1	3.3	11.4	2.8	920	29	27
YVF2-100L-6	1.5	4.0	15.4	2.8	930	36	34
YVF2-112M-6	2.2	6.0	22.2	2.8	945	43	41
YVF2-132S-6	3	7.4	29.7	2.8	965	60	56
YVF2-132M1-6	4	9.5	39.6	2.8	965	79	70
YVF2-132M2-6	5.5	12.6	54.5	2.8	965	83	74
YVF2-160M-6	7.5	18.2	73.9	2.8	970	120	108
YVF2-160L-6	11	26.5	108	2.8	970	143	131
YVF2-180L-6	15	31.3	147	2.8	975	191	171
YVF2-200L1-6	18.5	38.5	180	2.8	980	246	221
YVF2-200L2-6	22	45.4	214	2.8	980	255	225
YVF2-225M-6	30	58.8	291	2.8	985	322	292
YVF2-250M-6	37	69.2	359	2.8	985	438	408
YVF2-280S-6	45	84.2	436	2.8	985	500	465
YVF2-280M-6	55	102	533	2.8	985	575	540
YVF2-315S-6	75	143	724	2.8	990	901	861
YVF2-315M-6	90	173	869	2.8	990	980	940
YVF2-315L1-6	110	206	1062	2.8	990	1150	1110
YVF2-315L2-6	132	250	1274	2.8	990	1215	1175
YVF2-355M1-6	160	295	1544	2.8	990	1735	1695
YVF2-355M2-6	200	370	1930	2.8	990	1915	1875
YVF2-355L-6	250	456	2413	2.8	990	2025	1985

8-pole,750 r/min synchronous speed

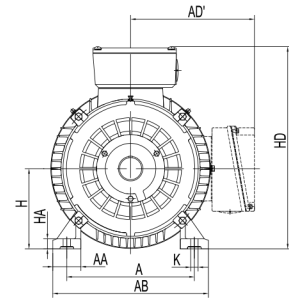
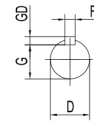
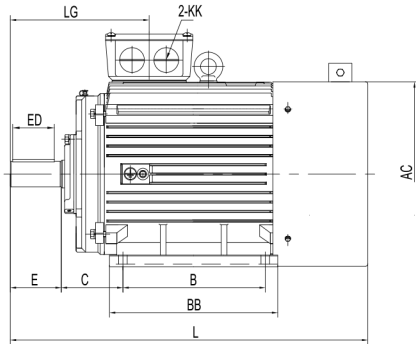
Motor Type	Rated Power (kW)	Rated Current A	Rated Torque N·m	$\frac{T_{max}}{T_n}$	Rated speed r/min	Weight kg	
						IC416	IC411
YVF2-132S-8	2.2	5.7	29.4	2.8	715	70	61
YVF2-132M-8	3	7.5	40.1	2.8	715	74	65
YVF2-160M1-8	4	9.6	53.1	2.8	720	106	94
YVF2-160M2-8	5.5	13.3	73	2.8	720	118	106
YVF2-160L-8	7.5	17	99.5	2.8	720	140	128
YVF2-180L-8	11	30.2	145	2.8	725	190	170
YVF2-200L-8	15	33.8	196	2.8	730	255	230
YVF2-225S-8	18.5	40.5	242	2.8	730	297	267
YVF2-225M-8	22	46.5	286	2.8	735	319	289
YVF2-250M-8	30	62.5	390	2.8	735	395	365
YVF2-280S-8	37	75.6	481	2.8	735	510	475
YVF2-280M-8	45	93.5	585	2.8	735	590	555
YVF2-315S-8	55	112	710	2.8	740	945	905
YVF2-315M-8	75	150	968	2.8	740	1021	981
YVF2-315L1-8	90	180	1162	2.8	740	1141	1071
YVF2-315L2-8	110	215	1420	2.8	740	1200	1160
YVF2-355M1-8	132	250	1693	2.8	745	1845	1805
YVF2-355M2-8	160	300	2052	2.8	745	1935	1895
YVF2-355L-8	200	380	2565	2.8	745	2085	2045

DIMENSIONS MOUNT B3

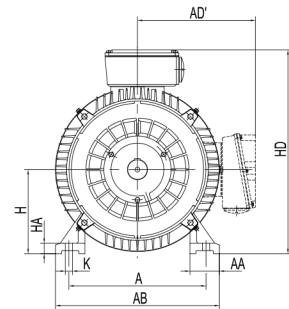
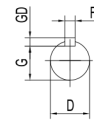
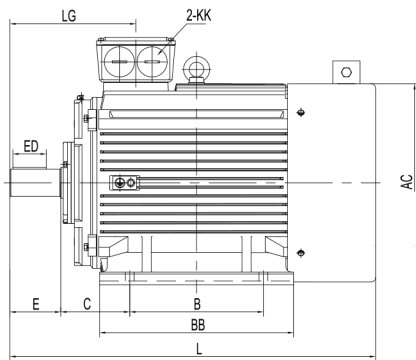
YVF2-90-132



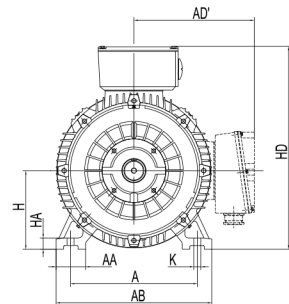
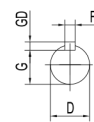
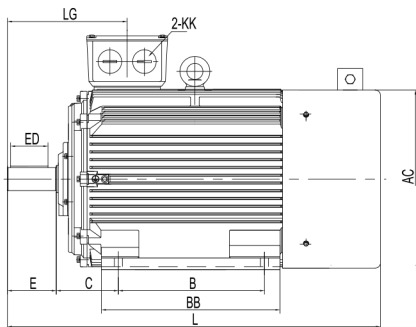
YVF2-160-200



YVF2-225-280



YVF2-315-355

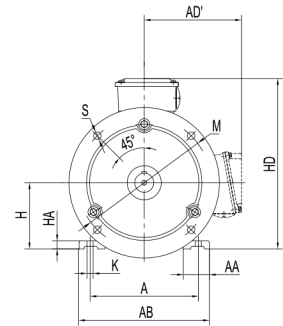
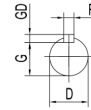
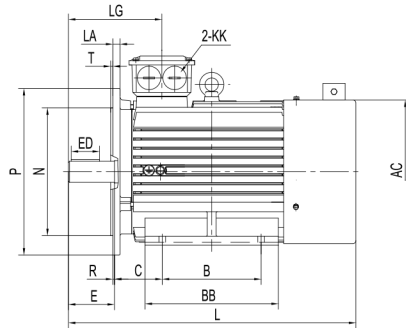


(4-8P)

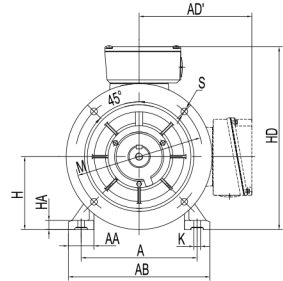
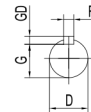
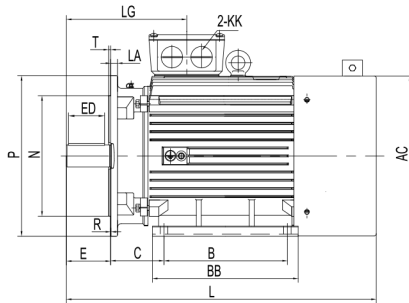
Frame	A	AA	AB	AC	AD'	B	BB	C	D	E	ED	F	G	GD	H	HA	HD	K	KK	L	LG
90S	140	36	180	190	165	100	135	56	24	50	32	8	20	7	90	12.5	260	10	M25×1.5	390	124
90L	140	36	180	190	165	125	160	56	24	50	32	8	20	7	90	12.5	260	10	M25×1.5	415	124
100L	160	40	200	215	170	140	182	63	28	60	40	8	24	7	100	14	275	12	M25×1.5	455	140
112M	190	45	230	236	195	140	195	70	28	60	40	8	24	7	112	14	310	12	M32×1.5	475	145
132S	216	52	265	275	215	140	205	89	38	80	56	10	33	8	132	16	350	12	M32×1.5	535	169
132M	216	52	265	275	215	178	245	89	38	80	56	10	33	8	132	16	350	12	M32×1.5	575	169
160M	254	65	320	330	265	210	260	108	42	110	80	12	37	8	160	19	425	14.5	M40×1.5	660	270
160L	254	65	320	330	265	254	305	108	42	110	80	12	37	8	160	19	425	14.5	M40×1.5	705	270
180M	279	70	350	380	280	241	285	121	48	110	80	14	42.5	9	180	22	440	14.5	M40×1.5	725	277
180L	279	70	350	380	280	279	325	121	48	110	80	14	42.5	9	180	22	440	14.5	M40×1.5	765	277
200L	318	80	390	420	315	305	355	133	55	110	80	16	49	10	200	25	505	18.5	M50×1.5	830	298
225S	356	75	435	465	335	286	350	149	60	140	100	18	53	11	225	28	550	18.5	M50×1.5	895	340
225M	356	75	435	465	335	311	375	149	60	140	100	18	53	11	225	28	550	18.5	M50×1.5	920	340
250M	406	100	485	520	370	349	450	168	65	140	100	18	58	11	250	33	635	24	M63×1.5	1025	357
280S	457	105	550	570	400	368	490	190	75	140	100	20	67.5	12	280	35	695	24	M63×1.5	1115	350
280M	457	105	550	570	400	419	540	190	75	140	100	20	67.5	12	280	35	695	24	M63×1.5	1165	350
315S	508	125	630	650	495	406	515	216	80	170	130	22	71	14	315	45	810	28	M63×1.5	1300	417
315M	508	125	630	650	495	457	625	216	80	170	130	22	71	14	315	45	810	28	M63×1.5	1410	417
315L	508	125	630	650	495	508	625	216	80	170	130	22	71	14	315	45	810	28	M63×1.5	1410	417
355M	610	125	735	735	640	560	850	254	95	170	140	25	86	14	355	49	1000	28	M63×1.5	1755	450
355L	610	125	735	735	640	630	850	254	95	170	140	25	86	14	355	49	1000	28	M63×1.5	1755	450

DIMENSIONS MOUNT B35

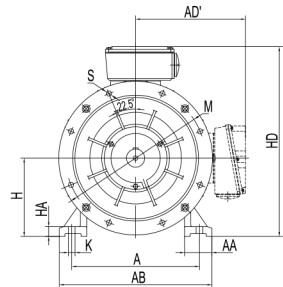
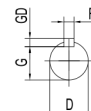
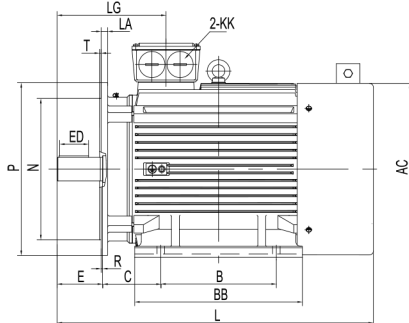
YVF2-90-132



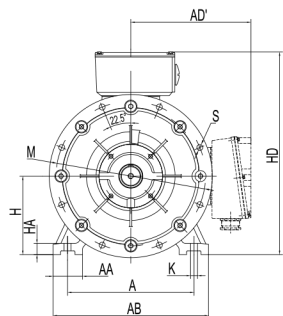
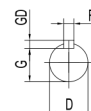
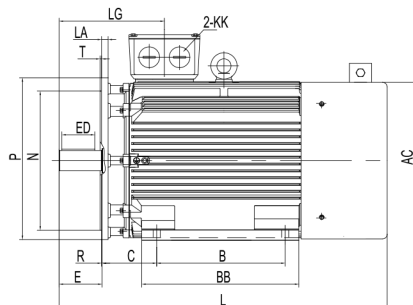
YVF2-160-200



YVF2-225-280



YVF2-315-355



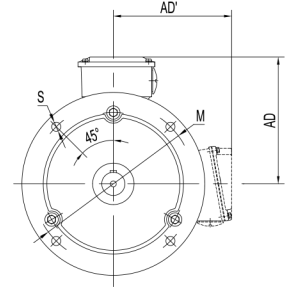
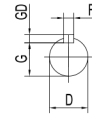
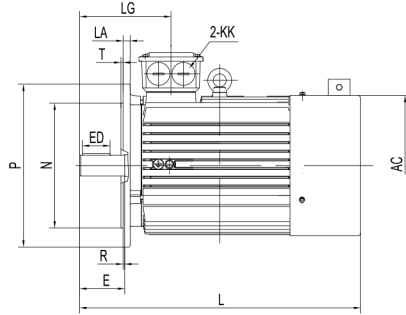
(4-8P)

FRAME	A	AA	AB	AC	AD'	B	BB	C	D	E	ED	F	G	GD	H	HA	HD	K	KK	L	LG	LA	M	N	P	S	T
90S	140	36	180	190	165	100	135	56	24	50	32	8	20	7	90	12.5	260	10	M25x1.5	390	124	12	165	130	200	12	3.5
90L	140	36	180	190	165	125	160	56	24	50	32	8	20	7	90	12.5	260	10	M25x1.5	415	124	12	165	130	200	12	3.5
100L	160	40	200	215	170	140	182	63	28	60	40	8	24	7	100	14	275	12	M25x1.5	455	140	14	215	180	250	14.5	4
112M	190	45	230	236	195	140	195	70	28	60	40	8	24	7	112	14	310	12	M32x1.5	475	145	14	215	180	250	14.5	4
132S	216	52	265	275	215	140	205	89	38	80	56	10	33	8	132	16	350	12	M32x1.5	535	169	14	265	230	300	14.5	4
132M	216	52	265	275	215	178	245	89	38	80	56	10	33	8	132	16	350	12	M32x1.5	575	169	14	265	230	300	14.5	4
160M	254	65	320	330	265	210	260	108	42	110	80	12	37	8	160	19	425	14.5	M40x1.5	660	270	15	300	250	350	18.5	5
160L	254	65	320	330	265	254	305	108	42	110	80	12	37	8	160	19	425	14.5	M40x1.5	705	270	15	300	250	350	18.5	5
180M	279	70	350	380	280	241	285	121	48	110	80	14	42.5	9	180	22	440	14.5	M40x1.5	725	277	15	300	250	350	18.5	5
180L	279	70	350	380	280	279	325	121	48	110	80	14	42.5	9	180	22	440	14.5	M40x1.5	765	277	15	300	250	350	18.5	5
200L	318	80	395	420	315	305	355	133	55	110	80	16	49	10	200	25	505	18.5	M50x1.5	830	298	17	350	300	400	18.5	5
225S	356	75	436	465	335	286	350	149	60	140	100	18	53	11	225	28	550	18.5	M50x1.5	895	340	20	400	350	450	18.5	5
225M	356	75	436	465	335	311	375	149	60	140	100	18	53	11	225	28	550	18.5	M50x1.5	920	340	20	400	350	450	18.5	5
250M	406	100	495	520	370	349	450	168	65	140	100	18	58	11	250	33	635	24	M63x1.5	1025	357	20	500	450	550	18.5	5
280S	457	105	550	570	400	368	490	190	75	140	100	20	67.5	12	280	35	695	24	M63x1.5	1115	350	22	500	450	550	18.5	5
280M	457	103	550	570	400	419	540	190	75	140	100	20	67.5	12	280	35	695	24	M63x1.5	1165	350	22	500	450	550	18.5	5
315S	508	125	630	650	495	406	515	216	80	170	130	22	71	14	315	45	810	28	M63x1.5	1300	417	24	600	550	660	24	6
315M	508	125	630	650	495	457	625	216	80	170	130	22	71	14	315	45	810	28	M63x1.5	1410	417	24	600	550	660	24	6
315L	508	125	630	650	495	508	625	216	80	170	130	22	71	14	315	45	810	28	M63x1.5	1410	417	24	600	550	660	24	6
355M	610	125	735	735	640	560	850	254	95	170	140	25	86	14	355	49	1000	28	M63x1.5	1755	450	25	740	680	800	24	6
355L	610	125	735	735	640	630	850	254	95	170	140	25	86	14	355	49	1000	28	M63x1.5	1755	450	25	740	680	800	24	6

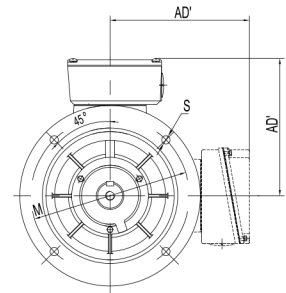
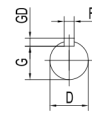
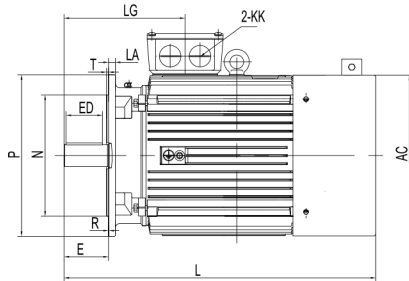
Note : R=0

DIMENSIONS MOUNT B5 & V1

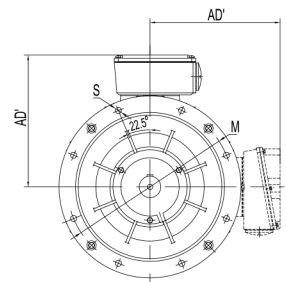
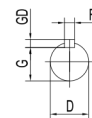
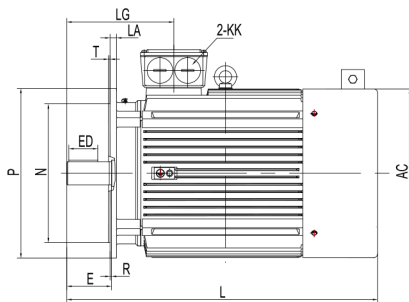
YVF2-90-132



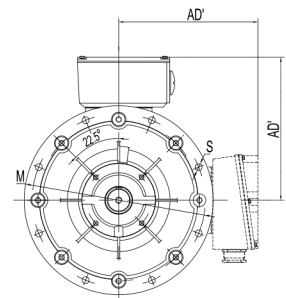
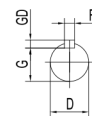
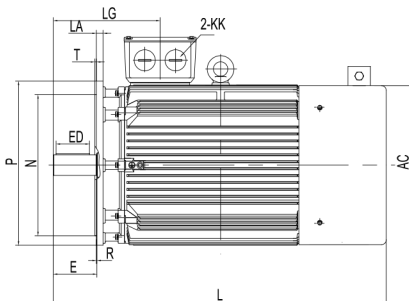
YVF2-160-200



YVF2-225-280



YVF2-315-355



(4-8P)

FRAME	AC	AD'	D	E	ED	F	G	GD	KK	L	LA	LG	M	N	P	S	T
90S	190	165	24	50	32	8	20	7	M25x1.5	390	12	124	165	130	200	12	3.5
90L	190	165	24	50	32	8	20	7	M25x1.5	415	12	124	165	130	200	12	3.5
100L	215	170	28	60	40	8	24	7	M25x1.5	455	14	140	215	180	250	14.5	4
112M	236	195	28	60	40	8	24	7	M32x1.5	475	14	145	215	180	250	14.5	4
132S	275	215	38	80	56	10	33	8	M32x1.5	535	14	169	265	230	300	14.5	4
132M	275	215	38	80	56	10	33	8	M32x1.5	575	14	169	265	230	300	14.5	4
160M	330	265	42	110	80	12	37	8	M40x1.5	660	15	270	300	250	350	18.5	5
160L	330	265	42	110	80	12	37	8	M40x1.5	705	15	270	300	250	350	18.5	5
180M	380	280	48	110	80	14	42.5	9	M40x1.5	725	15	277	300	250	350	18.5	5
180L	380	280	48	110	80	14	42.5	9	M40x1.5	765	15	277	300	250	350	18.5	5
200L	420	315	55	110	80	16	49	10	M50x1.5	830	17	298	350	300	400	18.5	5
225S	465	335	60	140	100	18	53	11	M50x1.5	895	20	340	400	350	450	18.5	5
225M	465	335	60	140	100	18	53	11	M50x1.5	920	20	340	400	350	450	18.5	5
250M	520	370	65	140	100	18	58	11	M63x1.5	1025	20	357	500	450	550	18.5	5
280S	570	400	75	140	100	20	67.5	12	M63x1.5	1115	22	350	500	450	550	18.5	5
280M	570	400	75	140	100	20	67.5	12	M63x1.5	1165	22	350	500	450	550	18.5	5
315S	650	495	80	170	130	22	71	14	M63x1.5	1300	24	417	600	550	660	24	6
315M	650	495	80	170	130	22	71	14	M63x1.5	1410	24	417	600	550	660	24	6
315L	650	495	80	170	130	22	71	14	M63x1.5	1410	24	417	600	550	660	24	6
355M V1	735	640	95	170	140	25	86	14	M63x1.5	-	25	450	740	680	800	24	6
355L V1	735	640	95	170	140	25	86	14	M63x1.5	-	25	450	740	680	800	24	6

Note : R=0

TECHNICAL DATA TABLE FOR VENTILATOR

Frame	Type	kW	r/min	Pa	m³/h	LW dB(A)
80	G80A	30	2300	70	330	62
90	G90A	42	2800	80	500	65
100	G100A	52	2800	82	660	67
112	G112A	60	2800	90	900	70
132	G132A	40	1400	50	780	70
160	G160A	120	1400	50	1300	70
180	G180A	120	1400	55	1300	70
200	G200A	370	1400	100	2400	70
225	G225A	370	1400	150	4200	74
250	G250A	370	1400	150	4200	77
280	G280A	450	1250	150	5000	77
315	G315A	450	1250	180	6200	85
355	G355A	650	1350	180	6500	88